



MBP0029

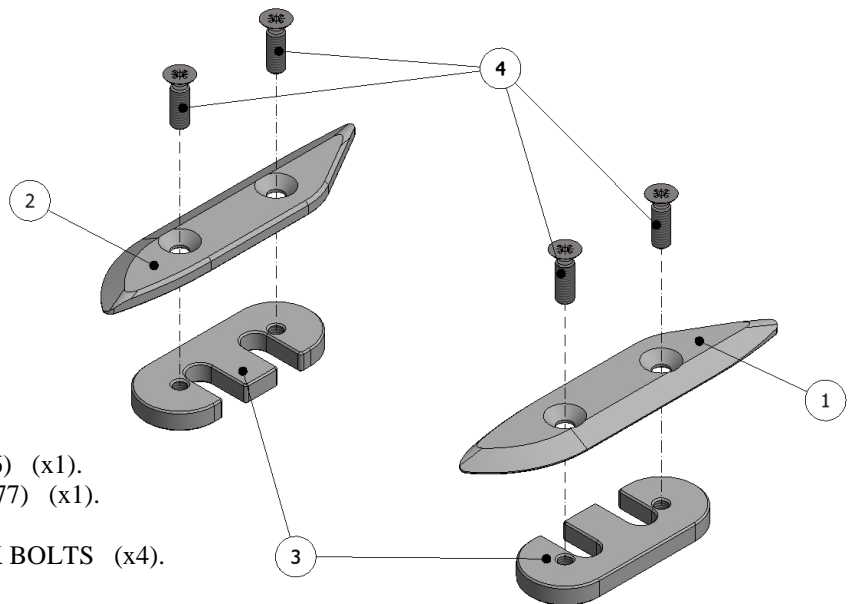
FITTING INSTRUCTIONS FOR MBP0029BK MIRROR BLANKING PLATE
YAMAHA T-MAX 530 '12- '16 & '17-

Page | 1



Please note that the way the kit is packed does not necessarily represent the way of mounting to the bike
THE PARTS SHOWN MAY BE REPRESENTATIVE ONLY (FOR CLARITY OF INSTRUCTIONS ONLY)

Please note that in cases where kits are packed with rubber washers holding the components onto the bolt – *the rubber washers should be thrown away!*



LEGEND

- ITEM 1 = BLANKING PLATE LEFT (BLP0076) (x1).
- ITEM 2 = BLANKING PLATE RIGHT (BLP0077) (x1).
- ITEM 3 = MOUNTING BLOCK (M0536) (x2).
- ITEM 4 = M5 x 16mm LONG COUNTERSUNK BOLTS (x4).

R&G

Unit 1, Shelley's Lane, East Worldham, Alton, Hampshire, GU34 3AQ

Tel: +44 (0)1420 89007 Fax: +44 (0)1420 87301 www.rg-racing.com Email: info@rg-racing.com



MBP0029



Picture 1



Picture 2



Picture 3



Picture 4



Picture 5



Picture 6



MBP0029

TOOLS REQUIRED

- 4mm Allen Key.
- Socket set & wrench.
- Phillips screwdriver.

Page | 3

FITTING INSTRUCTIONS

If fitting to '17- models

- Remove the bolt that secures the front of the nose bodywork in place that is shown in picture 1 along with the bolt in the top corner on both sides of the bike. The top left bolt is arrowed in picture 2.
- With the three bolts removed, the panel can be slid forwards and removed from the bike, as shown in picture 3.
- Remove the two bolts that secure the OEM mirror in place on both sides of the bike, as shown in picture 4.
- When the mirrors are removed, a rubber insert will remain on the bodywork, as shown in picture 5.
- This needs to be re-used, with the mounting block position on the reverse side of the rubber behind the bodywork as shown in picture 6.
- Position the R&G blanking plate into position within the rubber insert, before fitting the two countersunk bolts through the face with countersunk holes on the blanking and tighten into the threaded holes on the mounting block on the underside, sandwiching the rubber in place. *Do not overtighten as the bolts and blanking plates are made of plastic.*
- Repeat this procedure to fit the blanking plate on the other side of the bike.
- Re-fit the nose panel by sliding rearwards to mount that locating tabs before re-fitting the three bolts and tighten.

If fitting to '12-'18 models

- Remove the front nose panel and then fit the blanking plates using the same procedure as above.

ISSUE 1 21/11/2017 (AR)

Digital copies of these instructions are available to download from www.rg-racing.com

CONSUMER NOTICE

The catalogue description and any exhibition of samples are only broad indications of the Products and R&G may make design changes which do not diminish their performance or visual appeal and supplying them in such state shall conform to the order. The Buyer acknowledges no representation or warranty (other than as to title) has been given or will apply to the Products other than those in R&G's order or confirmation and the Buyer confirms it has chosen the Products as being of merchantable quality and suitable for its particular purposes. Where R&G fits the Products or undertakes other services it shall exercise reasonable skill and care and rectify any fault free of charge unless the workmanship has been disturbed. The Buyer is responsible for ensuring that the warranty on the motorcycle is not affected by the fitting of the Products. On return of any defective Products R&G shall at its option either supply a replacement or refund the purchase money but shall not be liable if the Products have been modified or used or maintained otherwise than in accordance with R&G's or manufacturer's instructions and good engineering practice or if the defect arises from accident or neglect. Other than identified above and subject to R&G not limiting its liability for causing death and personal injury, it shall not be liable for indirect or consequential loss and otherwise its liability shall be limited to the amounts paid by the Buyer for the Products or the fitting or service concerned. These terms do not affect the Buyer's statutory rights.

R&G RETURNS POLICY (NON-FAULTY GOODS)

Returns must be pre-authorized (if not pre-authorized the return will be rejected). Goods may only be returned direct to us if they were purchased direct from us (customer must prove if necessary). Otherwise to be returned to original vendor. Goods must be in re-sellable condition, in the opinion of R&G. All returns are subject to a 25% restocking and handling fee (25% of the gross value exc. P&P – at the prevailing price at time of purchase). The customer must pay any and all carriage charges. No returns of discontinued products, unless within 14 days of purchase. This policy does not affect your statutory rights and does not refer to faulty goods.

R&G

Unit 1, Shelley's Lane, East Worldham, Alton, Hampshire, GU34 3AQ

Tel: +44 (0)1420 89007 Fax: +44 (0)1420 87301 www.rg-racing.com Email: info@rg-racing.com



MBP0029

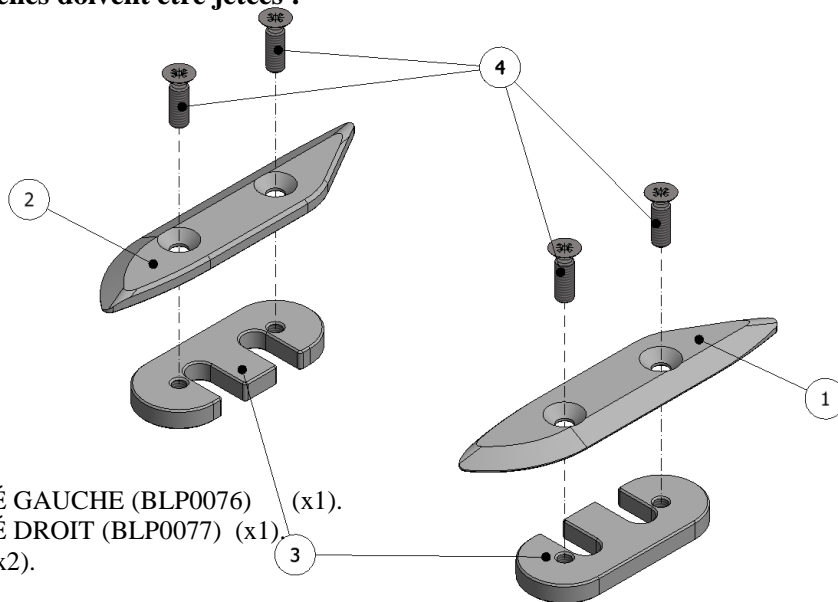
NOTICE DE MONTAGE POUR MBP0029BK
PLAQUE D'OBTURATION DE RÉTROVISEURS
YAMAHA T-MAX 530 '12- '16 & '17-

Page | 4



**La façon dont le kit est emballé ne correspond pas forcément à la façon de monter les pièces sur la moto.
LES PARTIES PRESENTÉES PEUVENT ÊTRE UNIQUEMENT REPRESENTATIVES (POUR LA CLARTE DES INSTRUCTIONS UNIQUEMENT)**

Notez que si les kits sont emballés avec des rondelles en caoutchouc servant à tenir les composants, ces rondelles doivent être jetées !



LÉGENDE

ARTICLE 1 = PLAQUE D'OBTURATION CÔTÉ GAUCHE (BLP0076) (x1).

ARTICLE 2 = PLAQUE D'OBTURATION CÔTÉ DROIT (BLP0077) (x1).

ARTICLE 3 = BLOC DE MONTAGE (M0536) (x2).

ARTICLE 4 = M5 x 16mm BOULONS (x4).

R&G

Unit 1, Shelley's Lane, East Worldham, Alton, Hampshire, GU34 3AQ

Tel: +44 (0)1420 89007 Fax: +44 (0)1420 87301 www.rg-racing.com Email: info@rg-racing.com



MBP0029



Photo 1

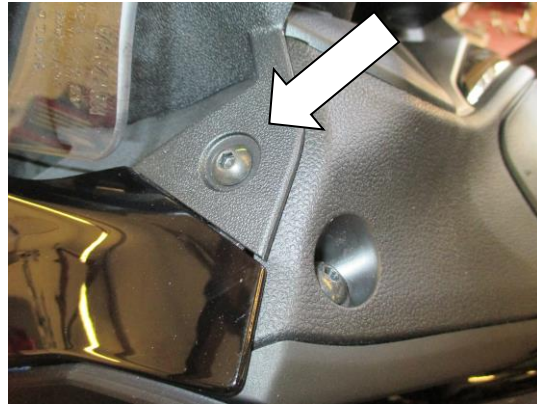


Photo 2

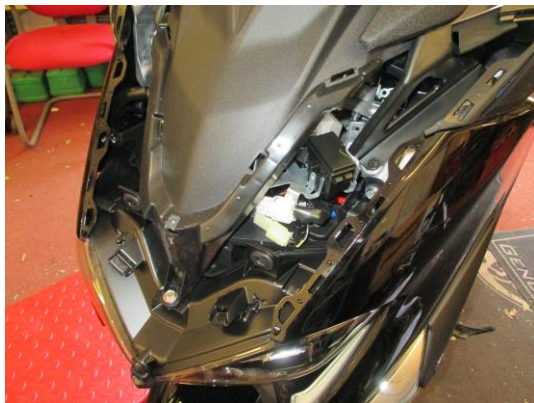


Photo 3



Photo 4



Photo 5



Photo 6



MBP0029

OUTILS REQUIS

- Clé Allen 4mm.
- Clé à cliquet + douille
- Tournevis cruciforme

Si l'installation se fait sur un modèle '17

- Enlever le boulon qui fixe l'avant du nez de carénage en place (voir photo 1) avec le boulon dans le coin supérieur des 2 côtés de la moto. Le boulon gauche supérieur est indiqué sur la photo 2.
- Une fois les 3 boulons enlevés, le panneau peut être glissé vers l'avant et enlevé de la moto (voir photo 3).
- Enlever les rétroviseurs d'origine en place des 2 côtés de la moto (voir photo 4).
- Une fois les rétroviseurs enlevés, un insert en caoutchouc restera sur le carénage (voir photo 5).
- Il doit être réutilisé, avec le bloc de montage en position du côté opposé du caoutchouc derrière le carénage (voir photo 6).
- Positionner la plaque d'obturation R&G en position dans l'insert en caoutchouc, avant d'insérer les 2 boulons à travers la face possédant les trous fraisés sur l'obturation puis serrer dans les trous filetés sur le bloc de montage au-dessous, prenant en sandwich le caoutchouc en place. Ne pas trop serrer car les boulons et plaques d'obturation sont faits de plastique.
- Répéter cette procédure pour monter la plaque d'obturation de l'autre côté de la moto.
- Remonter le nez du panneau en le glissant vers l'arrière pour monter les onglets de fixation avant de réinsérer les 3 boulons puis serrer.

Si l'installation se fait sur un modèle '12-'18

- Enlever le nez de panneau avant puis monter les plaques d'obturation en utilisant la même procédure que ci-dessus.

ISSUE 1 21/11/2017 (AR)

Notice disponible au téléchargement sur www.rg-racing.com

CONSUMER NOTICE

The catalogue description and any exhibition of samples are only broad indications of the Products and R&G may make design changes which do not diminish their performance or visual appeal and supplying them in such state shall conform to the order. The Buyer acknowledges no representation or warranty (other than as to title) has been given or will apply to the Products other than those in R&G's order or confirmation and the Buyer confirms it has chosen the Products as being of merchantable quality and suitable for its particular purposes. Where R&G fits the Products or undertakes other services it shall exercise reasonable skill and care and rectify any fault free of charge unless the workmanship has been disturbed. The Buyer is responsible for ensuring that the warranty on the motorcycle is not affected by the fitting of the Products. On return of any defective Products R&G shall at its option either supply a replacement or refund the purchase money but shall not be liable if the Products have been modified or used or maintained otherwise than in accordance with R&G's or manufacturer's instructions and good engineering practice or if the defect arises from accident or neglect. Other than identified above and subject to R&G not limiting its liability for causing death and personal injury, it shall not be liable for indirect or consequential loss and otherwise its liability shall be limited to the amounts paid by the Buyer for the Products or the fitting or service concerned. These terms do not affect the Buyer's statutory rights.

R&G RETURNS POLICY (NON-FAULTY GOODS)

Returns must be pre-authorized (if not pre-authorized the return will be rejected). Goods may only be returned direct to us if they were purchased direct from us (customer must prove if necessary). Otherwise to be returned to original vendor. Goods must be in re-sellable condition, in the opinion of R&G. All returns are subject to a 25% restocking and handling fee (25% of the gross value exc. P&P – at the prevailing price at time of purchase). The customer must pay any and all carriage charges. No returns of discontinued products, unless within 14 days of purchase. This policy does not affect your statutory rights and does not refer to faulty goods.

R&G

Unit 1, Shelley's Lane, East Worldham, Alton, Hampshire, GU34 3AQ

Tel: +44 (0)1420 89007 Fax: +44 (0)1420 87301 www.rg-racing.com Email: info@rg-racing.com



MBP0029

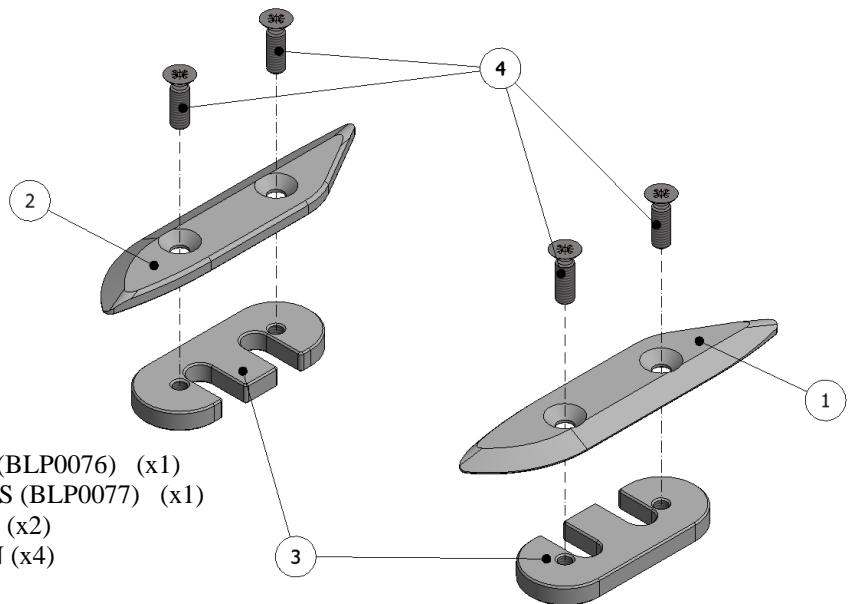
MONTAGEANLEITUNG FÜR MBP0029BK SPIEGEL-VERSCHLUSSPLATTEN
YAMAHA T-MAX 530 '12- '16 & '17-

Page | 7



Hinweis: Die Verpackung der Teile stellt nicht die Reihenfolge der Montage dar.
DIE ABGEBILDETEN TEILE DIENEN LEDIGLICH ZUR ERKLÄRUNG.

Hinweis für Kits mit Plastikunterlegscheiben an den Schrauben – Diese Plastikunterlegscheiben werden nicht für den Einbau benötigt!



LIEFERUMFANG

- ARTIKEL 1 = VERSCHLUSSPLATTE LINKS (BLP0076) (x1)
- ARTIKEL 2 = VERSCHLUSSPLATTE RECHTS (BLP0077) (x1)
- ARTIKEL 3 = AUFNAHMEPLATTE (M0536) (x2)
- ARTIKEL 4 = M5 x 16mm SENKSCHRAUBEN (x4)

R&G

Unit 1, Shelley's Lane, East Worldham, Alton, Hampshire, GU34 3AQ

Tel: +44 (0)1420 89007 Fax: +44 (0)1420 87301 www.rg-racing.com Email: info@rg-racing.com



MBP0029



Abbildung 1



Abbildung 2



Abbildung 3



Abbildung 4



Abbildung 5



Abbildung 6



MBP0029

SIE BENÖTIGEN FOLGENDES WERKZEUG

- 4 mm Inbusschlüssel
- Steckschlüsselsatz
- Kreuzschlitzschraubendreher

Page | 9 **MONTAGEANLEITUNG**

Montageanleitung für '17 Modelle

- Entfernen Sie die Schraube, die die vordere Verkleidungsspitze in Position befestigt (siehe Abbildung 1) und die Schraube an der oberen Ecke an beiden Seiten des Motorrades. Die Schraube oben links ist in Abbildung 2 gekennzeichnet.
- Sobald die drei Schrauben entfernt wurden, kann das Verkleidungsteil nach vorne geschoben und vom Motorrad entfernt werden – siehe Abbildung 3.
- Entfernen Sie die zwei Schrauben, die die Originalspiegel an beiden Seiten des Motorrades befestigen – siehe Abbildung 4.
- Nach der Entfernung der Spiegel bleibt ein Gummieinsatz in der Verkleidung – siehe Abbildung 5.
- Der Gummieinsatz wird wiederverwendet (an der Aufnahmeplatte). Positionieren Sie den an der Rückseite des Gummis hinter der Verkleidung – siehe Abbildung 6.
- Die R&G Spiegel-Verschlussplatte mit dem Gummieinsatz in Position bringen und die zwei Senkschrauben durch die Senkbohrungen an der Oberfläche führen. Die Schrauben in den Gewindebohrungen an der Aufnahmeplatte an der Unterseite befestigen. *HINWEIS: Die Schrauben und Verschlussplatten sind aus Plastik – ziehen Sie sie daher nicht zu fest.*
- Wiederholen Sie diesen Vorgang, um die Verschlussplatte an der anderen Seite des Motorrades zu montieren.
- Montieren Sie die vordere Verkleidungsspitze (schieben Sie sie nach hinten zur Haltelasche, bevor Sie die drei Schrauben wieder montieren und befestigen).

Montageanleitung für '12-‘18 Modelle

- Entfernen Sie die vordere Verkleidungsspitze, dann montieren Sie die Spiegel-Verschlussplatten wie oben beschreiben.

AUSGABE 1 21/11/2017 (AR)

Eine digitale Version dieser Montageanleitung kann auf folgender Seite heruntergeladen werden: www.rg-racing.com

CONSUMER NOTICE

The catalogue description and any exhibition of samples are only broad indications of the Products and R&G may make design changes which do not diminish their performance or visual appeal and supplying them in such state shall conform to the order. The Buyer acknowledges no representation or warranty (other than as to title) has been given or will apply to the Products other than those in R&G's order or confirmation and the Buyer confirms it has chosen the Products as being of merchantable quality and suitable for its particular purposes. Where R&G fits the Products or undertakes other services it shall exercise reasonable skill and care and rectify any fault free of charge unless the workmanship has been disturbed. The Buyer is responsible for ensuring that the warranty on the motorcycle is not affected by the fitting of the Products. On return of any defective Products R&G shall at its option either supply a replacement or refund the purchase money but shall not be liable if the Products have been modified or used or maintained otherwise than in accordance with R&G's or manufacturer's instructions and good engineering practice or if the defect arises from accident or neglect. Other than identified above and subject to R&G not limiting its liability for causing death and personal injury, it shall not be liable for indirect or consequential loss and otherwise its liability shall be limited to the amounts paid by the Buyer for the Products or the fitting or service concerned. These terms do not affect the Buyer's statutory rights.

R&G RETURNS POLICY (NON-FAULTY GOODS)

Returns must be pre-authorized (if not pre-authorized the return will be rejected). Goods may only be returned direct to us if they were purchased direct from us (customer must prove if necessary). Otherwise to be returned to original vendor. Goods must be in re-sellable condition, in the opinion of R&G. All returns are subject to a 25% restocking and handling fee (25% of the gross value exc. P&P – at the prevailing price at time of purchase). The customer must pay any and all carriage charges. No returns of discontinued products, unless within 14 days of purchase. This policy does not affect your statutory rights and does not refer to faulty goods.

R&G

Unit 1, Shelley's Lane, East Worldham, Alton, Hampshire, GU34 3AQ

Tel: +44 (0)1420 89007 Fax: +44 (0)1420 87301 www.rg-racing.com Email: info@rg-racing.com